

BREEZE POWER Whole House Fan

A Breeze Power Natural Cooling System will cool and ventilate every room and the roof space of your home for 3¢ an hour.

There is no compressor, duct work or circulating water, just naturally cooling breezes of fresh air flowing when and where you need them at the touch of a switch.

Hot air, cooking odours, airborne allergens, fumes and pollutants are whisked away before they can build up to uncomfortable or unhealthy levels.

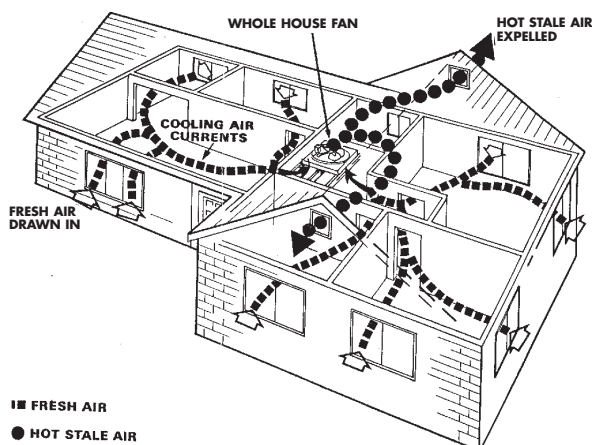


A Breeze Power Whole House Fan system installed at the top of the stair case of a two storey home.

The ceiling shutter blades close down when the system is switched off.

No more "house like an oven".

The in-roof fan creates a powerful updraught. Air from rooms immediately begins to flow through the house. It rushes up into the roof space through the fan blades.



The roof space air becomes pressurised by the sheer volume of air being forced into it. Hot air is dumped outside fast via under-eave or gable vents.

By changing the air in rooms around 35 to 45 times every hour and up to 60 times an hour in the roof space, super hot air can not accumulate and radiant heat absorbed by the roof, walls and ceilings of your home is also reduced. There is no residual heat from the day to keep your home hot after sun down.

Increased personal comfort.

It's a fact you can feel more comfortable at a higher temperature surrounded by moving air than you will in still air at a lower temperature.

Chill effect of moving air on people doing light work.

Velocity 91M per minute

Actual Temp	Relative Humidity	Sensed Temp.	Windchill Effect
28°C	73%	22°C	6°C
28°C	55%	21°C	7°C
29°C	81%	24°C	5°C
31°C	64%	22°C	9°C
32°C	82%	27°C	5°C
32°C	65%	25°C	7°C
32°C	50%	24°C	8°C

Moving air feels cooler because it evaporates moisture from your skin and helps relieve the sultry stickiness of humid days.

This sensation of coolness is called "windchill" and is how all fans or breezes cool and refresh you in hot weather.

Windchill is also a factor in Winter heating and is the reason why circulating heated air needs more energy to warm you than radiant heating where air is still.

Home Cooling for just 3¢ an hour.

The virtually silent motor uses 250W of single phase power. On current tariffs this works out to 3¢ an hour.

A Breeze Power system can save you thousands of dollars on the installation and running costs of a big reverse cycle air conditioning system. Choose radiant heating for energy efficient Winter heating.

Breeze Power Fans Fit Most Roof Types.



There are four sizes of Breeze Power Whole House Fans partnered with two types of automatically opening and closing ceiling shutters to suit either rafter or gang nail truss roofs.

The fan size relates to the cubic metre area of the home.

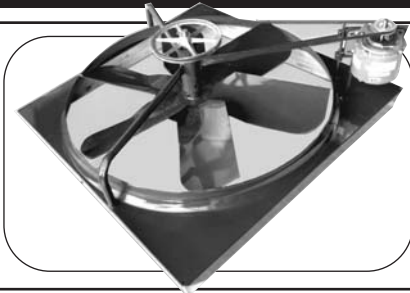
Roof Top Canopies enable installation in homes with no roof space. The canopy is custom made for each project and colour treated to blend with the roof.

Multiple systems cool larger buildings.

Schools, halls, churches, kindergartens, factories, warehouses, poultry sheds, stables, kennels, nursing homes, student hostels, even army barracks are all enjoying economical natural cooling with multiple Breeze Power systems.

All fans can be installed vertically as well as horizontally.

TECHNICAL SPECIFICATIONS

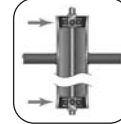


The BREEZE POWER in-roof six bladed radial fan comes fully assembled ready to install.

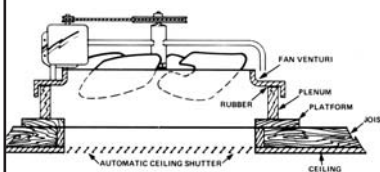
BREEZE POWER'S exclusive "Automatic Belt Tensioning" extends motor life and eliminates the need for manual belt adjusting.



The BREEZE POWER Fan assembly features a rubber-mounted deck for quiet operation and sealed ball bearings for longer life.



FAN FRAME DIMENSIONS



Fan Diameter	Height	Length	Width
600mm	381	762	762
760mm	381	864	864
915mm	381	1016	1016
1070mm	381	1169	1169
1220mm	381	1372	1372

CEILING SHUTTER DIMENSIONS

Rafters



Normally installed down the hall

Fan Diameter	Internal		External	
	Length	Width	Length	Width
600mm	610	610	660	660
760mm	761	761	813	813
915mm	915	839	965	889
1070mm	1168	864	1219	915
1220mm	1422	915	1473	965

All41 Frederickmel

Gang Nail Truss



Normally installed across the hall

Fan Diameter	Internal		External	
	Length	Width	Length	Width
600mm	775	545	810	610
760mm	838	762	889	813
915mm	1050	762	1095	815
1070mm	1189	907	1245	970

All shutters finished in white enamel

Motors: 600mm, 760mm, 915mm and 1070mm Fans - 250 Watt, 1.9 Amp Controllable, 1220mm Fan, 370 Watt, 2.5 Amp Three Speed

Fan Diameter	Motor Watts	Pully Diameter	H	R.P.M.		C.F.M.			M3/H			
				M	L	H	M	L	H	M	L	
600mm	250	23/4"	475	Variable	450	3900	Variable Speed			600	Variable Speed	
760mm	250	23/4"	370	Variable	310	6000	Variable Speed			10200	Variable Speed	
915mm	250	23/4"	357	Variable	224	10500	Variable Speed			17500	Variable Speed	
1070mm	250	21/4"	290	Variable	150	14500	Variable Speed			24500	Variable Speed	
1220mm	370	23/4"	294	265	235	17400	16000	13800	29500	27200	23400	

N.B. 1220mm Fan has three speed motor

WARRANTY

1. Breeze Power Natural Cooling Pty. Ltd. hereafter called "The Company" warrants the fan blades, mounting, plenum and ceiling shutter to be free of any defects in materials or workmanship for a period of three years from the date of purchase.
2. The Company warrants the motor, belt and switch to be free of defects in materials or workmanship for a period of one year from date of purchase. (Full Warranty details are set out in the installation and operating instructions included with every unit.)

AVAILABLE FROM

BREEZE POWER NATURAL COOLING

41 Frederick Street, Northgate, Qld. 4013

Tel: 1800 637 175 Facsimile: (07) 3266 8333 Email: info@breezpower.com.au

www.breezpower.com.au ABN 62 003 649 509